



Community NEWS



Albert Lea • Alden • Clarks Grove • Conger • Emmons • Freeborn • Geneva • Glenville • Hollandale • Hartland • Hayward • Manchester • Maple Island • Myrtle • Oakland • Twin Lakes

Volume 4 , Number 2

"City, County, and Watershed News Direct From the Source"

March/April 2011

Broadway Avenue Streetscape Plan - We Need Your Input!

A reconstruction plan for Broadway Avenue from Fountain Lake to Front Street has been prepared for the City by Architectural Consultant, Patrick Waddick. The reconstruction plan is required due to the age of the street and utilities and will include work from building face to building face. All paving, sidewalks, underground utilities, lighting, and landscaping will be removed and replaced.

Broadway Avenue is the main business street in Albert Lea and dates back to the beginning of the city around 1858. The street was originally planned as a grand avenue, 100 feet in width from building face to building face, and terminating at Fountain Lake Park. The sewer and water utilities within the street are approximately 90 years old and in need of replacement. In addition, there are heat tunnels that run under the sidewalks and the tunnels are over 100 years old and deteriorating. The tunnels provided a conduit for steam pipes that were used to heat downtown buildings. The heat source was the coal fired electric power plant that was located south of the Freeborn County Courthouse.

The City was the recipient of a "Walkability Study" by consultant Dan Burden as part of the gifts the City received during the AARP / Blue Zones Vitality Project in 2009. As a result of the study, the City approved ordinances requiring all new subdivisions and the reconstruction of streets to be in the "complete streets" format. A "complete street" is one in which motorized vehicles, non-motorized vehicles and pedestrians have equal priority and access. Therefore, a "complete street" is one with wide sidewalks, easy pedestrian crossings, benches for rest, landscaping, safe parking bays, and clearly directed traffic lanes.

The streetscape plan takes into consideration all of the "complete street" goals and provides for a very desirable environment for encouraging new economic development in the downtown. Specifically, the plan calls for a change in angle parking from 50 degree to 45 degree making it safer to back out of stalls with greater visibility. Sidewalks will be increased to 19 feet in width providing for the



Architect's rendering of proposed downtown

opportunity to have on sidewalk tables and dining or bench conversation areas. Landscaping will be planted into the sidewalk instead of planters with large grates to catch water. Paving will be designed to reduce runoff and the load on storm sewers. An information kiosk will be provided for each block that will list existing businesses and have space for posting of notices and events. Street lighting will be designed to light the sidewalk and street and will be directed downward reducing the night lighting of the sky and apartments above the buildings.

In addition, the streetscape plan includes a redevelopment concept for Fountain Lake Park. A series of steps are extended into the park from Broadway Avenue. These steps will also serve as seating terraces for watching events in the park.

The projected cost of the streetscape project is \$5,313,614 and Fountain Lake Park improvements are estimated at \$328,900.

As part of the streetscape project, the City is offering matching grants up to \$50,000 to repair the fronts of downtown buildings. The owner will give a facade easement to the City in exchange for the grant. The improvements will need to be approved by the Heritage Preservation Commission. Improvements, once completed, will need to continue in their historic context.

Plans are available for review in the City Engineer and City Managers' offices. Plans will also be presented to groups on request. A summary can be found on the city's website, www.cityofalbertlea.org under the Development tab. For additional information, please contact Bob Graham, Director of Community Development, (507) 377-4316 or bgraham@city.albertlea.org.



Proposed Gazebo area of Fountain Lake Park

 **Be Sure to Clip Out Page 4:**
2010 Schedule for Household Hazardous Waste Collection

Annual Watershed Meeting March 10

The Shell Rock River Watershed District will recognize the role of volunteers and highlight successful programs from 2010 at its annual meeting in March.

The meeting, which the public is encouraged to attend, will be held at 7:00 p.m. Thursday, March 10, in the Freeborn County Board Room.

See the Watershed District's Annual Report on Pages 2-3.

Shell Rock River
Watershed District
Working Together
to Improve Water Quality





377-5785

Shell Rock River Watershed District

Annual Report for the Shell Rock River Watershed District

Annual Meeting at 7 p.m. on Thursday, March 10, in the Freeborn County Board Room

Established:

June 25, 2003
By Citizen Petition

Address:

c/o Freeborn County
Government Center
411 S. Broadway / P.O. Box 1147
Albert Lea, MN 56007

Telephone: 507-377-5785

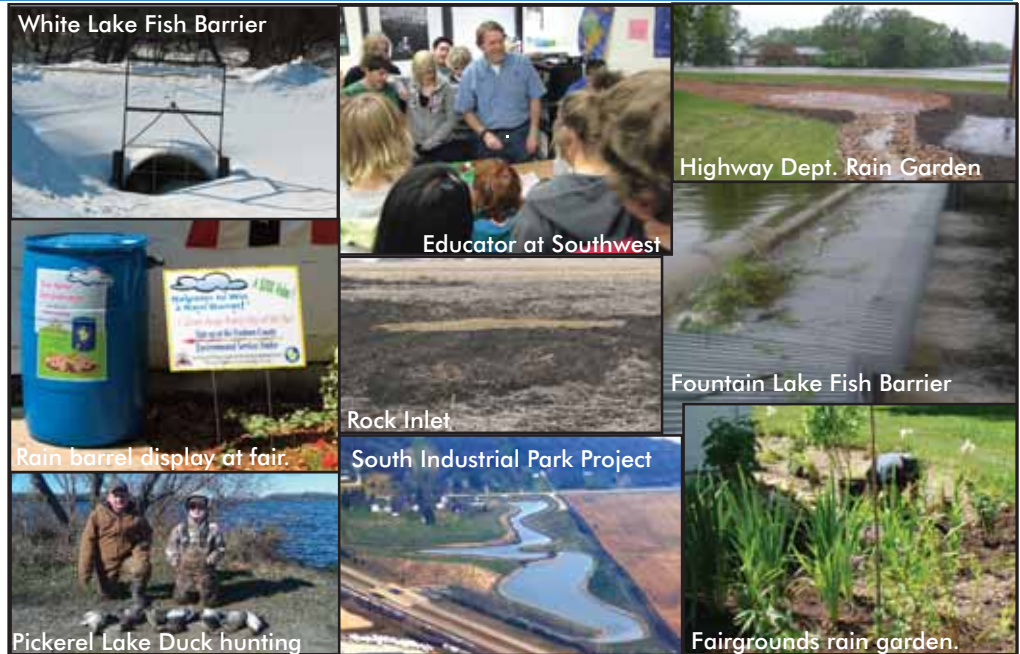
Fax: 507-377-4494

Email:

shellrockwatershed@co.freeborn.mn.us

Included counties:

Freeborn



Watershed Quick Facts

District Size: 246 Square Miles

Number of Staff: 5

Major Lakes: Pickerel, White (Chapeau), Fountain, Albert Lea, Upper and Lower Twin

Watershed Drains to: Shell Rock River, then to the Cedar River, the Iowa River, and finally the Mississippi River

Impaired Waters: State and federal governments list 9.8 miles of the Shell Rock River as impaired for fecal coliform bacteria and turbidity. Albert Lea, Fountain and Pickerel Lakes were put on the impaired waters list for excessive nutrients in 2008.

Regular Meeting: 8:30 a.m. the second Tuesday of each month, Albert Lea City Council Chambers (broadcast on ALTV)

Board of Managers

Name	Position	Address	Telephone
Gary Pectorious	Chairperson	20770 707th Avenue, Albert Lea, MN 56007	507-373-6758
Bruce Haugsdal	Vice Chairperson	2117 Kenneth Drive, Albert Lea, MN 56007	507-373-2743
Clayton Petersen	Treasurer	22108 720th Avenue, Albert Lea, MN 56007	507-373-0061
Art Ludtke	Secretary	1114 Wood Park Ln, Albert Lea, MN 56007	507-377-1522
Alan Bakken	Manager	16691 740th Avenue, Albert Lea, MN 56007	507-373-6686
Roger L. Peterson	Manager	25619 750th Avenue, Clarks Grove, MN 56016	507-826-3229
Brett Richards	Manager	662 Meadow Lane, Albert Lea, MN 56007	507-256-7580

Board Appointments:

Under Minnesota Statute 103D, the Freeborn County Board appoints the Board of Managers for the Watershed District. Each manager serves a 3-year term.

Annual Meeting:

7 p.m. Thursday, March 10, in the Freeborn County Board Room, 411 S. Broadway Ave. The meeting will air on Charter Communications Channel 16.

District Administrator:

Brett Behnke
507-402-4806
Office located in the historic Freeborn County Courthouse

Future Projects

Phosphorous Budgeting Study (U of M)
Dredging - Wedge Creek
Continue Water Monitoring
Rural Subwatershed Projects
Precision Conservation
206 Ecosystem Restoration Project
Shell Rock River Headwaters Restoration



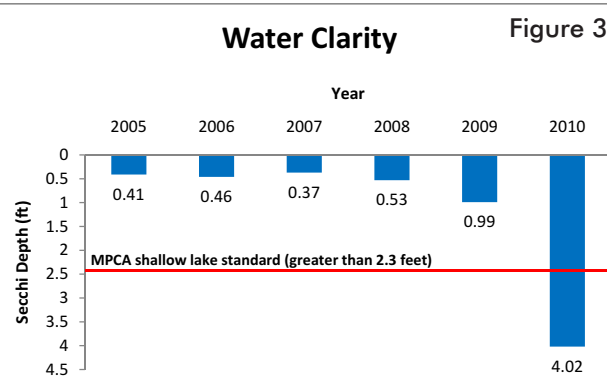
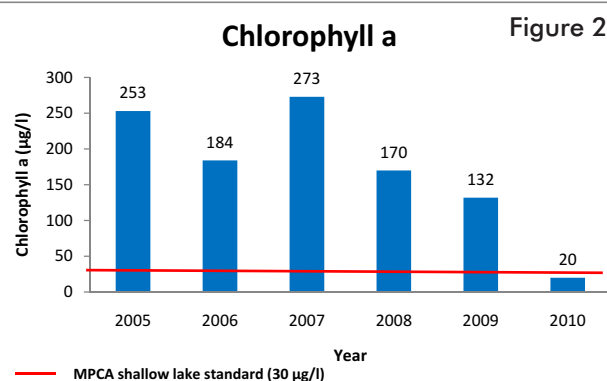
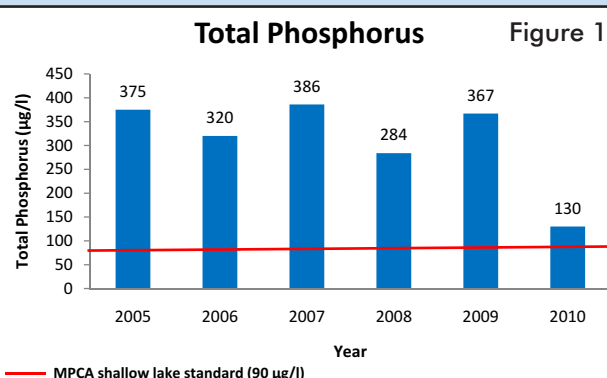
Pickrel Lake Reclamation Project Comes Full-circle

Water Quality Update

Historically Pickrel Lake, which sits atop the Shell Rock River Watershed District, has had very poor water quality. Water clarity in the summer is generally less than 6" and does not allow for any aquatic vegetation to grow. Algae blooms are common and occur throughout the summer. The nutrient-rich algae laden water, which flows directly into Fountain Lake, was degrading downstream lakes.

This last summer (2010), water samples were taken from Pickrel Lake on a bi-weekly basis, starting in April and ending in October. The samples were sent to the Minnesota Department of Health Laboratory in St. Paul and analyzed for several different parameters. These parameters give us a good idea of how healthy the lake is. The Minnesota Pollution Control Agency has set up some water quality standards. By comparing the water quality results from Pickrel Lake to the MPCA shallow lake standards we can determine if it is indeed still impaired.

The first parameter that has shown a huge improvement since the lake reclamation is total phosphorus. Phosphorus is a nutrient required by all organisms for the basic processes of life. Phosphorus enters the water either externally, from runoff or ground water, or internally, from the nutrient rich sediments on the bottom of the lake. Excess phosphorus may come from many sources, including fertilizers applied to agricultural fields, lawn fertilizers, municipal and industrial waste, urban runoff, and wind-eroded sediments. Phosphorus is a very important parameter to measure because it directly affects algae blooms in our lakes. An excessive amount of phosphorus leads to an excess of algae. Figure 1 shows the amount of total phosphorus in Pickrel Lake from 2005 thru 2010. As you can see, pre-reclamation (2005-2009) the amount of total phosphorus was very high, most years, greater than 4 times MN PCA's standard for Southern Minnesota shallow lakes (.09 mg/l). In 2010, the amount of total phosphorus decreased greatly, nearly reaching the MN PCA standard.



Another parameter sampled in Pickrel Lake is Chlorophyll A. Chlorophyll A sampling gives us a good idea of how much algae is present in the lake. Just like phosphorus, excessive amounts of algae are unhealthy for the lake. Excessive amounts of algae prohibit light from reaching the bottom of the lake and deter native aquatic vegetation from growing. Aquatic vegetation is important because it uses phosphorus to grow, leaving less for algae to feed off of. Similar to total phosphorus, Chlorophyll A was also greatly decreased by the lake reclamation project. As you can see in Figure 2, the amount of Chlorophyll A present in Pickrel Lake in 2007 was ten times that of 2010. More importantly, Pickrel Lake is now meeting the MN PCA's standard for Chlorophyll A, indicating a much more healthy lake.

The last parameter taken from Pickrel Lake is a secchi disk reading. This is done by lowering a white disk into the water until it disappears and then recording that depth. A secchi disk reading is another way to measure the lake's water clarity. As you can see in Figure 3, Pickrel Lake's water clarity has improved tremendously. During the 2010 sampling season, the majority of readings were taken with the white disk lying on the bottom of the lake, being clearly seen. The MN PCA shallow lakes standard of 2.3 feet for a secchi disk reading was met and exceeded.

While the effort of eliminating Common Carp from Pickrel Lake was a large task, we are now seeing the benefits in the improvement of water quality in Pickrel, Mud, and Fountain Lake. Pickrel and Mud Lake flow directly into Fountain Lake via Schoff Creek, which is now contributing water that is clean and clear instead of water contaminated with high amounts of Phosphorus and Algae.

2010 Administrative Fund

2010 Administrative Fund	
Administrative Fund Revenue	
Administrative Levy	\$250,716.50
Interest Income	\$31.18
Reimbursements	\$664.76
Subtotal	\$251,412.44
Carried forward from 2010	\$41,001.94
Total	\$292,414.38
Administrative Fund Expenses	
Personnel	\$148,117.41
Travel and Training	\$21,541.42
Office	\$32,063.50
Professional Services	\$43,252.92
Projects	\$3,359.61
Subtotal	\$248,344.86
Carry forward to 2011	\$44,079.52
Total	\$292,414.38

2010 Non-Property Tax Fund

2010 Non-Property Tax Fund	
Non-Property Tax Revenue	
Local option sales tax	\$1,302,895.99
Grant Reimbursement	\$142,708.99
Investment Income	\$1,859.54
Carried forward from 2009	\$740,752.52
Total	\$2,188,217.00
Non-Property Tax Expenses	
Erosion and Water Control	\$37,109.92
Albert Lea Lake Dam	\$3,636.00
City Stormwater Management	\$138,800.82
Subwatershed Projects	\$433,577.09
Dredging Elements	\$34,784.24
Water Monitoring	\$96,483.51
Rural Sewage Management	\$74,114.56
Subtotal	\$818,506.14
Carryover to 2011 Projects	\$1,369,710.90
Total	\$2,188,217.04

2010 Citizen Advisory Committee

- Mike Lee, Chair
- Don Flatness, Secretary
- Larry Anderson
- Jim Nelson
- Roger M Nelson
- Kyle Skov
- Dave Villarreal
- Nick Kruse



Freeborn County Environmental Services

2011 Household Hazardous Waste Collection Schedule

NO EARLY DROP-OFFS!



Household Hazardous Waste collection is a free service for Freeborn County residents only

Electronic collection May 20 & September 30 at the Fairgrounds

Attention: Individuals and businesses!

Take advantage of this opportunity to dispose of electronics: **10 a.m. to 2 p.m. only!**

Special Price May 20 & Sept. 30

Note: We do not accept appliances (white goods), such as stoves, microwaves, dehumidifiers or cooling units. Electronics not accepted at any other hazardous waste collection.

Date	City	Day	Time
4 - 27	Freeborn	Wednesday	Noon - 3 p.m.
5 - 5	Conger	Thursday	Noon - 3 p.m.
5 - 10	Myrtle	Tuesday	Noon - 3 p.m.
5 - 14	Albert Lea	Saturday	9 a.m. - Noon
5 - 18	Hollandale	Wednesday	Noon - 3 p.m.
5 - 25	Alden	Wednesday	3 p.m. - 6 p.m.
6 - 2	Emmons	Thursday	Noon - 3 p.m.
6 - 7	Geneva	Tuesday	Noon - 3 p.m.
6 - 11	Albert Lea	Saturday	9 a.m. - Noon
6 - 16	Manchester	Thursday	11 a.m. - 2 p.m.
6 - 21	Hayward	Tuesday	Noon - 3 p.m.
6 - 29	Hartland	Wednesday	Noon - 3 p.m.
7 - 9	Albert Lea	Saturday	9 a.m. - Noon.
7 - 13	Twin Lakes	Wednesday	3 - 6 p.m.
7 - 21	Oakland	Thursday	Noon - 3 p.m.
7 - 26	Clarks Grove	Tuesday	Noon - 3 p.m.
8 - 20	Albert Lea	Saturday	9 a.m. - Noon.
8 - 23	Maple Island	Tuesday	11 a.m. - 2 p.m.
9 - 24	Albert Lea	Saturday	9 a.m. - Noon.
9 - 28	Glenville	Wednesday	Noon - 3 p.m.





All participants must complete a written survey. Residents may attend any collection in any city.



Location:

Albert Lea HHW collections are held at the **City Transfer Station 2506 W. Richway Drive.** Collections in other cities are generally at the city hall or fire station.

NEW! Farmers may bring their unwanted agriculture pesticides to the hazardous waste collections for disposal. Funding for this is provided by the Minnesota Department of Agriculture Waste Pesticide Collection Program in cooperation with Freeborn County.

RECYCLE	FLUSH INTO SEWER	PUT IN TRASH	HHW COLLECTION
oils brake fluid transmission fluid empty containers printer cartridges clean empty cans empty aerosols	(small quantities/gallon-less) soap disinfectant glass cleaner cleaner with ammonia cleaner with bleach windshield washer fluid small quantities/gallon-less	dried latex paint glaze, spackle dried cosmetics empty containers dry water base glue putty, grout, caulk alkaline flashlight batteries	Ag Chemicals acids antifreeze gasoline solvents weed killer insect killer poison fuels / additives fertilizer roofing tar concrete cleaner liquid paints stain, varnish, oil paint pool chemicals glue with solvents drain & oven cleaner nail polish remover fluorescent bulbs auto batteries rechargeable batteries
NOT ACCEPTABLE	<p>For More Information Call the Freeborn County Environmental Services (507) 377-5186</p>   		
explosives medical waste business waste radioactive waste filters unidentified products garbage used oil	<p>2011</p>  <p>2011</p> <p>Old prescription eyeglasses and hearing aids will be accepted during collections and donated to the Lions Club.</p>		

377-5186


Freeborn County Environmental Services

Waste Management 2011 Calendar

1-800-777-8408

Your Collection Week is **Every Other Week**

 **Yellow Week**

 **Green Week**

March						
Su	Mo	Tu	We	Th	Fr	Sa
		1	2	3	4	5
6	7	8	9	10	11	12
13	14	15	16	17	18	19
20	21	22	23	24	25	26
27	28	29	30	31		

April						
Su	Mo	Tu	We	Th	Fr	Sa
					1	2
3	4	5	6	7	8	9
10	11	12	13	14	15	16
17	18	19	20	21	22	23
24	25	26	27	28	29	30

May						
Su	Mo	Tu	We	Th	Fr	Sa
1	2	3	4	5	6	7
8	9	10	11	12	13	14
15	16	17	18	19	20	21
22	23	24	25	26	27	28
29	30	31				

June						
Su	Mo	Tu	We	Th	Fr	Sa
			1	2	3	4
5	6	7	8	9	10	11
12	13	14	15	16	17	18
19	20	21	22	23	24	25
26	27	28	29	30		

July						
Su	Mo	Tu	We	Th	Fr	Sa
					1	2
3	4	5	6	7	8	9
10	11	12	13	14	15	16
17	18	19	20	21	22	23
24	25	26	27	28	29	30
31						

August						
Su	Mo	Tu	We	Th	Fr	Sa
	1	2	3	4	5	6
7	8	9	10	11	12	13
14	15	16	17	18	19	20
21	22	23	24	25	26	27
28	29	30	31			

September						
Su	Mo	Tu	We	Th	Fr	Sa
				1	2	3
4	5	6	7	8	9	10
11	12	13	14	15	16	17
18	19	20	21	22	23	24
25	26	27	28	29	30	

October						
Su	Mo	Tu	We	Th	Fr	Sa
						1
2	3	4	5	6	7	8
9	10	11	12	13	14	15
16	17	18	19	20	21	22
23	24	25	26	27	28	29
30	31					

November						
Su	Mo	Tu	We	Th	Fr	Sa
		1	2	3	4	5
6	7	8	9	10	11	12
13	14	15	16	17	18	19
20	21	22	23	24	25	26
27	28	29	30			

December						
Su	Mo	Tu	We	Th	Fr	Sa
				1	2	3
4	5	6	7	8	9	10
11	12	13	14	15	16	17
18	19	20	21	22	23	24
25	26	27	28	29	30	31

Drug Drop Box

Freeborn County Partners In Prevention coalition members and partners have teamed up to help decrease prescription drug misuse and abuse, as well as help protect the environment here in Freeborn County. Partners include the United Way, Drug Education Task Force, Albert Lea Police Department, Freeborn County Sheriff's Office and Freeborn County Environmental Services.

Beginning in February 2011 when you enter the Freeborn County Law Enforcement Center lobby (located on the NE corner of the Government Center, 411 S. Broadway, Albert Lea) you will find the **Drug Drop Box**. Seven days a week/twenty-four hours a day, this box is available to Freeborn County residents who wish to safely dispose of unused drugs. Seventy percent of youth who abuse prescription drugs say they get them from friends and family. By getting these unused drugs out of homes we will decrease youth access to the drugs. Reducing access is a powerful strategy for preventing and reducing youth substance use and abuse.

- Instructions for dropping off unused drugs:
- 1) Leave drug in its original container.
 - 2) Use a marker cross out your name and personal information on the container.
 - 3) Keep the name of the drug visible.
 - 4) Drop the unused drugs into the **Drug Drop Box**.

NO NEEDLES/NO SHARPS accepted. Over the counter medication can be disposed of in the trash, over the counter medication containers can be recycled.

For information on the **Drug Drop Box** call Freeborn County Partners In Prevention at 377-5504.



Yellow Week

MONDAY CLARKS GROVE FREEBORN	FRIDAY ALDEN EMMONS HARTLAND MANCHESTER
THURSDAY CONGER TWIN LAKES	

Green Week

FRIDAY GENEVA HAYWARD HOLLANDALE	MONDAY GLENVILLE
--	----------------------------



Upcoming Senior Center Fundraisers

The Albert Lea Senior Center will have their second Home and Recreation Show Fundraiser at the Skyline Plaza in March. There will be food available March 12 from 4:00 to 8:00 p.m. - March 13 from 9:00 a.m. to 4:00 p.m. - March 14 from 11:00 a.m. to 4:00 p.m. The lunch is served in the Senior Center. The price is right so stop in and enjoy lunch with a friend! Everyone is welcome.

In April the Albert Lea Senior Center will have their Third Annual Soup and Dessert Fundraiser on Tuesday, April 26. There will be 5 different kinds of soup along with a large assortment of desserts - it's a great meal with lots of socialization, so bring your friends. Everyone is welcome.

City Asks for Streetscape Project support in State Bonding Bill

The Mayor and Council submitted a detailed letter to Senator Dan Sparks and Representative Rich Murray during the visit to the Capitol on February 9th while lobbying on the LGA issue. The request is for \$684,000 which would fund the surface amenities such as decorative street lights, kiosks, plantings, and benches along the four block phase one project, Main Street to Fountain Street.

There is no assurance at this date there will be a State Bond Bill in the 2011 Session of the legislature. The City believes this project merits consideration either in 2011 or 2012 as it will enhance the downtown in significant ways



that match other adjacent investments being planned such as restoration of historic storefronts and the potential ALMC project in the Freeborn Bank and Jacobson buildings. Future projects along Broadway may include new multiple housing and/or service/commercial investment at the north or south areas.

The City is exploring other financing options and grant funding that together would allow the Phase One Broadway Streetscape project to be scheduled for design, bidding and construction in 2012 or 2013.

Sign Ordinance Proposal

Business and personal signs of all types within the City of Albert Lea are regulated by the City's Zoning Ordinance. An amendment to this ordinance is now proposed primarily for updating purposes, however, there are three significant changes as follows:

1. Signs may no longer be controlled by the content of the sign message.
2. Electronic reader boards also known as dynamic signs will be permitted in all commercial districts including the downtown National Commercial Historic District.
3. Projecting signs will be permitted within the B-3 Central Business District (downtown) including the National Commercial Historic District.

Former Mayor Mike Murtaugh formed a citizens committee in January 2010 to review the existing sign ordinance section of the Zoning Ordinance. This was partly initiated by a request to have a dynamic sign in the downtown. A temporary moratorium was placed on the installation of dynamic signs in the city for one year. The committee's work was completed December 2010 and a review process was started with the Planning Commission and Heritage Preservation Commission. The business community and general public are now invited to comment on the proposal prior to the City Council taking action to adopt the amended ordinance.

Signs are currently regulated partly by the

message on the sign; for example, real estate signs are regulated differently than home occupation signs but both are permitted in the front yards of homes. The proposal does not differentiate between the messages and residents are limited to a six square foot per side sign, no matter the message content.

Dynamic signs are those that have characteristics of movement or change, caused by automated means, either electronic or mechanical. This includes changes in the display, the sign structure, or any other component of the sign. These signs will be limited to one message change each eight seconds and the change must take place within a split second with moving, fading, or scrolling prohibited. They will be permitted in all commercial districts, including the historic downtown, but not in residential districts.

Projecting signs are attached to a building and extend perpendicular to the building front more than 18 inches. Projecting signs were prohibited in the downtown when the sign ordinance was amended in 1976. Now, smaller projecting signs are being encouraged in the downtown by the Heritage Preservation Commission. Projecting signs in the downtown may extend out 3 1/2 feet and may be 4 feet in height. They must be at least 8 feet above the sidewalk.

For more information please contact Bob Graham, Community Development Director, (507) 377-4316 or bgraham@city.albertlea.org.

Police Citizens Academy Applications Due March 1st

The Albert Lea Police Department's "Citizen's Academy" is currently accepting applications for the 2011 session.

Classes will be held on Thursday evenings from 7:00 pm- 9:00 pm. Starting on March 24th through May 12th with a graduation ceremony on Monday, May 16, 2011.

The "Citizen's Academy" is designed to give the citizen's of Albert Lea a look into the workings of their local police department.

Officers with the Albert Lea Police Department will be holding training sessions on a variety of duties of the police department.

Applicants must have the following qualifications:

Resident of the City of Albert Lea or work in Albert Lea

Must be at least 18 years of age

Must pass a criminal background check

The class will be limited to 15 participants.

Applications can be obtained at the Freeborn County Law Enforcement Center, or by contacting Lt. Jeff Strom at 507-377-5254. Lt. Strom can also be reached by e-mail at jeff.strom@co.freeborn.mn.us

Applications will be accepted until Tuesday, March 1, 2011.



Albert Lea Parks and Recreation *The City of Albert Lea*

WOW Zone Trip

Families welcome, children 6 and under need to be with an adult

Join us as we head to Mankato's very own Family Entertainment Center! Come play unlimited laser tag, mini golf and bowling. There is also an arcade full of games. Pizza and beverages will be provided. Bring extra money for arcade games.

When: Thursday, April 21st (no school)
Time: Bus leaves City Arena at 9:00 a.m. and returns approx. 3:30 p.m. (*kids need to wear trip shirt)
Where: WOW Zone-Mankato, MN
Fee: \$18
 Register by April 15th

8th Annual Easter Egg Hunt

Sponsored by: Albert Lea Tribune, Northbridge Mall & Park & Rec

Make sure to bring a basket for your eggs! Also, the Easter Bunny will make an appearance so make sure to bring your camera. Don't be late!



When: Saturday, April 23rd
Where: Northbridge Mall
Time: 9:30-10:00 a.m.-
 0-4 years & Special Needs (Groups of 15 at a time, limit 5 eggs)
 10:00 a.m. Sharp!!! Ages 5-7 and Ages 8-11
FREE to participate!

Swim Bowl Skating

2nd-6th grade

What's swim bowl skating? Well, it's where you go swimming, and then a little while later we pack up and go bowling and then we do a little skating. Come join us for a fun day of swimming at the YMCA followed by bowling at Holiday Lanes and skating at the City Arena. Challenge your friends to a bowl-off or maybe enjoy some synchronized swimming. Pizza and pop will be provided at Holiday Lanes. Bring a towel and suit for swimming and warm clothes for skating.

When: Monday, April 25th (no school)
Time: Bus leaves City Arena at 10:00 a.m. and pick up is at 4:00 p.m. (*kids need to wear trip shirt)
Where: YMCA-Holiday Lanes-City Arena
Fee: \$12



Jumpin Jelly Beans!

Can you guess how many jelly beans are in our jar? The closest guess without going over wins five Albert Lea Aquatic Center passes to use this summer! You must register in person at the Parks & Recreation office located at the City Arena, but winners need not be present to win. Each participant gets one guess. Winner will be announced on Friday, April 22nd.

FREE (contest starts March 14th and ends April 22nd)

Off The Wall Soccer

Played at Albert Lea City Arena on Authentic Indoor Soccer Carpet

- Team T-shirt
- Only \$20/person \$25 /out of town
- League runs April 12—May 26

10 & Under Tuesday & Saturday
 Starts April 12 5:45 p.m.(will play Tues. 5:45 & 6:45 & Sat. 3:00 & 4:00)

8 & Under Thursday & Saturday
 Starts April 14 5:45 p.m.(will play Thurs. 5:45 & 6:45 & Sat. 11:00 & 12:00)

6 & Under Wednesday & Saturday
 Starts April 13 5:45 p.m.(will play Wed. 5:45 & 6:45 & Sat. 1:00 & 2:00)

Pre-K (must be 4) Saturday
 Starts April 23 9:00 a.m. (will play Sat. 9:00 & 10:00)

Please be at Arena on the day & time listed above (Schedules will be handed out at this time).

Registration Deadline: April 8th - register at the Parks and Recreation Office in the City Arena or online (see below).

WE NEED YOU!!! NO EXPERIENCE NEEDED!

Volunteer coaches are needed—2 coaches per team and 4 teams per level. No experience is needed! If interested call 377-4370.

A coaches' meeting will be scheduled before season begins.

Senior Center



Membership Dues: Annual fee is \$30 per year, January 1 - December 31.

Hours: Monday- 8:00 a.m. to 12 noon, Tuesday - Friday 8:30 a.m.-4:30 p.m.

As a member of the Albert Lea Senior Center you will receive a monthly newsletter to keep you up to date on Center events.

Participate in: Aerobics, Yoga, Walking Club, Red Hat Society, Crafts and Card Recycling, Monthly Birthday Party, Play Pheffer, 500 or Bridge, Blood Pressure Checks, Innovision Eye Care, Coping with Grief, Stress Management Class, Class on Macular Degeneration, AARP Driver Safety Class, Ping Pong and Special Events.

Visit the Pool Room with 5 pool tables - use the computers in the lounge, watch TV or put in a movie, work on puzzles or visit with friends.

Take a day trip to exciting destinations around Minnesota, Iowa and Wisconsin.

**You can now register for our programs and activities online!
 Go to www.cityofalbertlea.org and scroll down until you see
 "Parks & Rec Registration" click on this to create an account.**

Community News

c/o The City of Albert Lea
221 E. Clark St.
Albert Lea, Minnesota 56007

Albert Lea Public Library



Join the Albert Lea Public Library for a

Dr. Seuss Party

Wednesday, March 2nd from 2 p.m.-4 p.m.
Drop in program, come any time between 2 p.m.-
4 p.m. We will read Dr. Seuss stories at 3:30pm.
Games, Crafts and Birthday cake!!

It's story TIME @your library™

Storytimes are Mondays, Tuesdays and
Thursdays at 10:30 a.m. and Thursday
evening at 6:00 p.m.

Story times consist of stories, songs, finger-
plays, magnetic board stories and match-
ing games, music and rhythm activities,
crafts and snacks.



You're Never Too Old to Click N' Scroll

Basic Computer Classes will be
March 9 and 23. Each class meets for
one session.

Pick up a registration form at a
circulation desk.

Space is limited.

Elections March 15th

The Special Primary Election for the City of Albert Lea Ward 1 Councilor will be held on March 15, 2011 at Brookside School. The last day to absentee vote at the County Auditor's Office is March 14, 2011. You may vote absentee on Saturday, March 12, 2011 from 10:00 a.m.-3:00 p.m. at the County Auditor's Office. The Public Accuracy Test will take place at the Auditor's Office on March 9, 2011 at 10:00 a.m. The public is invited to attend this test.

The candidates for Ward 1 are:

John Schulte V
Jeffrey McLaughlin
Stuart Olson
Harold Kamrath
George Gillespie
Dave Klatt

The Special General Election for the County Commissioner's Seat will be held on March 15, 2011 and that will be at Halverson School and United Methodist Church.

The candidates for District 5 are:

Mike Lee
Tony Pectorious