



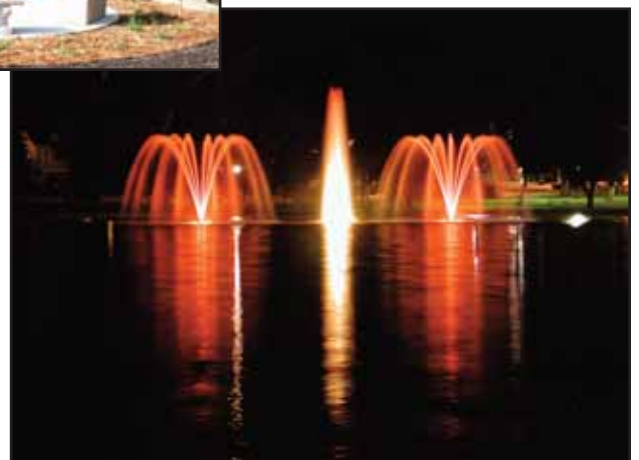
Wish Book

Albert Lea, MN

What Will Your Legacy Be?

Many of the wonderful amenities that our community enjoys have been donated by various groups and citizen. These include, but aren't limited to:

- Shelter at Memorial Park - donated by Shinefest
- Children's Garden at Fountain Lake Park - donated by the Sesquicentennial Committee
- Play Equipment at Frank Hall Park - donated by the Kiwanis Clubs of Albert Lea
- Disc Golf Course at Bancroft Bay Park - designed by Pro Manufacturing who also found sponsors for each hole.
- Fountains at New Denmark Park - donated by the Friends of the Fountains



Albert Lea Police Department



Ceiling mounted Multi-media projector.
\$1200⁰⁰

Digital cameras for each squad car or Officer.

\$350 each



Replacement defibrillators

\$2200 each

(8 needed)

Infrared Gun

\$1300 each



On-Site Speed Reminder

\$2000 each

(Would Like 7)

Albert Lea Police Department



SWAT Command Vehicle

\$200,000

Albert Lea Police Department



Monrovia, CA Police Monument

Law Enforcement statue adjacent the veteran's area.

(Statue above just an example - actual statue subject to design)

Up to **\$100,000**

Community Development



Horse race sculpture for East Main Street Flood Area.

Up to **\$100,000**

Community Development

Water Street Plaza

Design Objectives:

- Connectivity to Green Spaces and Activity areas
- Redesigned circulation pattern for existing parking lots near theatre and legion
- Year-round usable plaza working off of existing downtown and regional themes

\$200,000-\$300,000



Community Development

William Street Plaza

\$200,000-\$300,000



Fountain
Plantings
Cobblestones

Community Development

Channel Improvements

- Redeveloping the retaining walls along the river channel, which are deteriorating, into safer fishing spots.
- Developing a master plan for the Blazing Star Landing.
- Grading and seeding the Landing site to make it more appealing to developers.

\$1,000,000



Community Development

Alliant Energy Substation Screening

\$100,000



Iron Work
Plantings



Public Art

- Albert Lea
- Cap Emmons
- Marion Ross
- Eddie Cochran
- Kids Playing
- Animals/Birds, etc.

Up to **\$40,000**



City Arena

Siding and Windows

\$15,000



City Arena

Seasonal Banners



City Arena

Mezzanine seating

\$80,000-\$100,000



City Arena

Field House for Off-Season Practice

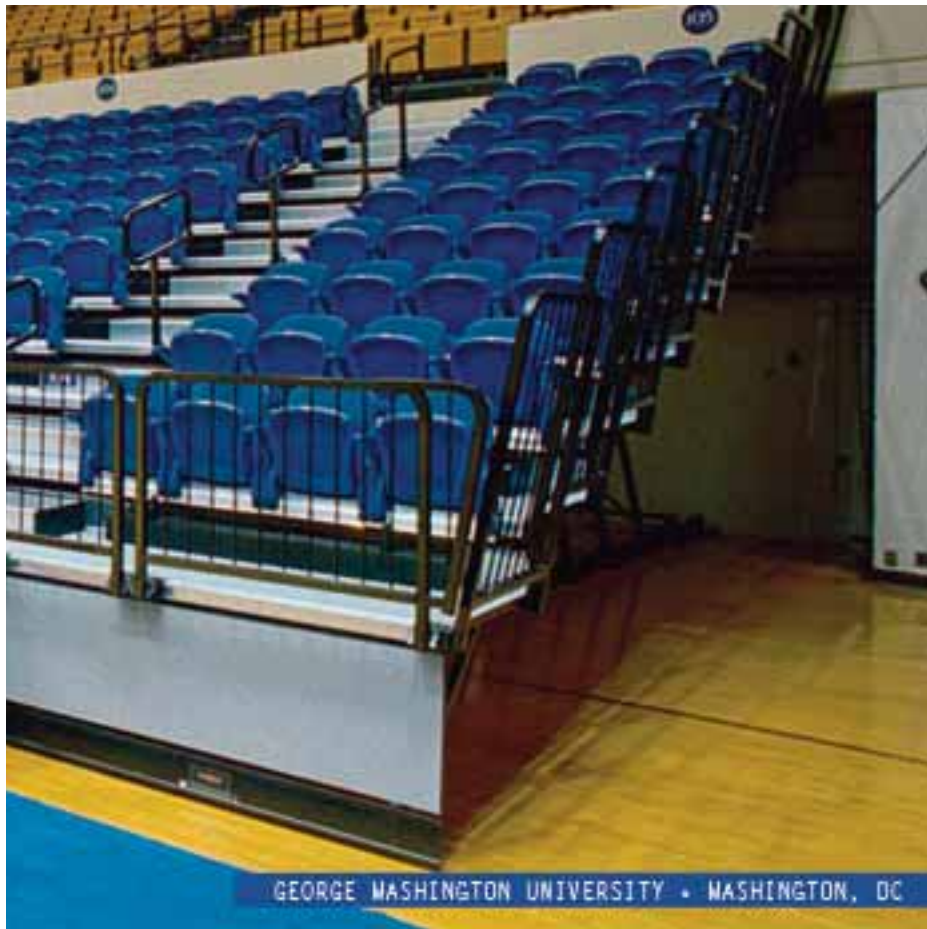
\$300,000-\$400,000



Illinois State University Field House

City Arena

New Seats



Dog Park

\$30,000



Drop Slide for Aquatic Center

\$80,000

(Blue side on the left)



Oakwood Circle and Shoreland Heights Play Equipment

\$15,000 each



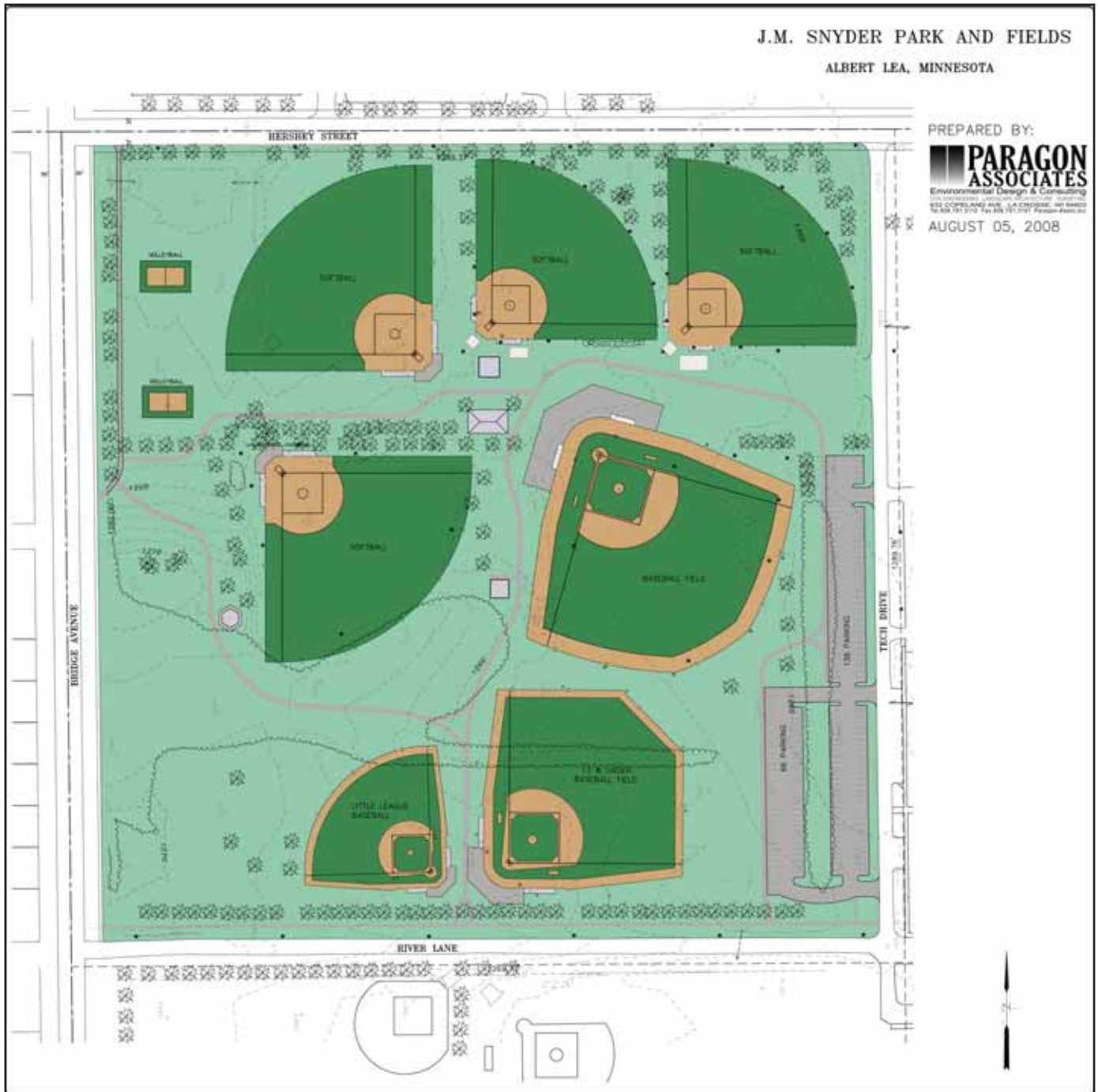
Year Round Pavilion/Cottage

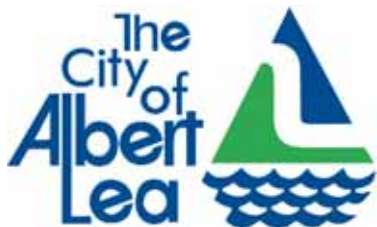
\$80,000 - \$100,000



Baseball Complex

\$3,500,000





The City of Albert Lea

221 E. Clark Street
Albert Lea, MN 56007
507-377-4330