



# Community NEWS



Albert Lea • Alden • Clarks Grove • Conger • Emmons • Freeborn • Geneva • Glenville • Hollandale • Hartland • Hayward • Manchester • Maple Island • Myrtle • Oakland • Twin Lakes

Volume 5, Number 4

"City, County, and Watershed News Direct From the Source"

July/August 2011

## Gypsy Moths

In your daily escapades you may have noticed some cardboard boxes attached to various trees around the county. Freeborn County Environmental Services is participating in a gypsy moth trapping program courtesy of the Minnesota Department of Agriculture. There are 25 traps within the county located at many of the township halls, parks, and other various locations, including some generous residents' homes. The traps are staying out until September, when they will be removed and checked for gypsy moths.

What are these moths you're wondering? Gypsy moths are an invasive species belonging to the butterfly family. They were originally imported from Europe, in an attempt to create a stronger silk worm. These moths are able to survive on 300 various trees, bush, and grassy species and is currently considered one of the most destructive pests to trees and shrubs. They're largely in the northeastern states but are moving west. The damage occurs when the moth is in its caterpillar stage. They're

able to eat 3 square feet of leaves in the short time (roughly one month) they stay a caterpillar. The adult moths come out around July and stay until October. This is when the trapping will occur. The moths are caught in the trap with a pheromone (female scent) used to attract the male moths. Minnesota has seen small pockets of these moths but due to a great trapping program, they were detected during the early stages and eradicated quickly.

If you come across one of these traps, please don't touch it! These traps are our best early detection for finding gypsy moths. Some of the traps have some great information below them. Feel free to read up and educate yourself on these pesky moths. If you ever come across a damaged or fallen trap, let the Environmental Services office know, so we can get it fixed and back up as soon as possible.

For more information, visit: [www.mda.state.mn.us](http://www.mda.state.mn.us)



Gypsy Moth



Gypsy Moth trap



## Water Testing Available at the Fair

The Environmental Services Department is offering a free well water testing service at the Freeborn County Fair again this year. Residents can draw water samples and bring them to the 4-H building from 10 a.m. till 2 p.m., Wednesday, Aug. 3 and have the water tested for nitrates while you wait. Put the water sample (about a cup) in

a sealed jar or zip bag and keep it cool. The water sample should be taken as you leave home so it is fresh. The testing equipment used is lent to us by the DNR and we have put in a request for the use of their machine for Wednesday of fair week. The machine will only test for nitrates. To learn more about well water testing, refer to the Environmental Services web site at [www.co.freeborn.mn.us](http://www.co.freeborn.mn.us).



July 4 at Dusk - Fountain Lake



## Freeborn County Fair

Tuesday to Sunday, Aug. 2 - Aug. 7

(507) 373-6965 [www.freeborncountyfair.com](http://www.freeborncountyfair.com)

## Grandstand Shows

Tues., Aug. 2 - Jerrod Niemann	8:30 pm
Wed., Aug. 3 - The Beach Boys	8:30 pm
Thurs., Aug. 4 - Larry Gatlin & the Gatlin Bros.	8:30 pm
Fri., Aug. 5 - Joe Nichols	8:30 pm
Sat., Aug. 6 - Finger Eleven	8:30 pm

## Table of Contents

Environmental Services.....1-2  
 City of Albert Lea .....3-6  
 Shell Rock River Watershed.....7-8

The Community News is published bi-monthly by the City of Albert Lea, Freeborn County and the Shell Rock River Watershed District. Comments are welcome and should be directed to:

**City of Albert Lea:**  
[tkauffmann@city.albertlea.org](mailto:tkauffmann@city.albertlea.org)

**Freeborn County:**  
[randy.tuchtenhagen@co.freeborn.mn.us](mailto:randy.tuchtenhagen@co.freeborn.mn.us)

**Shell Rock River Watershed:**  
[brett.behnke@co.freeborn.mn.us](mailto:brett.behnke@co.freeborn.mn.us)

**ALBERT LEA FREEBORN COUNTY 3RD OF JULY PARADE - 6 P.M.  
 2011 PARADE THEME "FREEBORN COUNTY PAST, PRESENT & FUTURE"**

**377-5186**

# Freeborn County Environmental Services

## WM Residential Recycling 2011 Calendar

1-800-777-8408

Your Collection Week is **Every Other Week**



Yellow Weeks



Green Weeks



July						
Su	Mo	Tu	We	Th	Fr	Sa
					1	2
3	4	5	6	7	8	9
10	11	12	13	14	15	16
17	18	19	20	21	22	23
24	25	26	27	28	29	30
31						

August						
Su	Mo	Tu	We	Th	Fr	Sa
	1	2	3	4	5	6
7	8	9	10	11	12	13
14	15	16	17	18	19	20
21	22	23	24	25	26	27
28	29	30	31			

September						
Su	Mo	Tu	We	Th	Fr	Sa
				1	2	3
4	5	6	7	8	9	10
11	12	13	14	15	16	17
18	19	20	21	22	23	24
25	26	27	28	29	30	

October						
Su	Mo	Tu	We	Th	Fr	Sa
						1
2	3	4	5	6	7	8
9	10	11	12	13	14	15
16	17	18	19	20	21	22
23	24	25	26	27	28	29
30	31					

November						
Su	Mo	Tu	We	Th	Fr	Sa
		1	2	3	4	5
6	7	8	9	10	11	12
13	14	15	16	17	18	19
20	21	22	23	24	25	26
27	28	29	30			

December						
Su	Mo	Tu	We	Th	Fr	Sa
				1	2	3
4	5	6	7	8	9	10
11	12	13	14	15	16	17
18	19	20	21	22	23	24
25	26	27	28	29	30	31

Yellow Weeks		
<u>Mondays</u>	<u>Thursdays</u>	<u>Fridays</u>
Clarks Grove	Conger	Alden
Freeborn	Twin Lakes	Emmons
		Hartland
		Manchester

Green Weeks	
<u>Mondays</u>	<u>Fridays</u>
Glenville	Geneva
	Hayward
	Hollandale

### Electronics collection September 30 at the Fairgrounds

**Attention: Individuals  
and businesses!**

Take advantage  
of this opportunity  
to dispose  
of electronics:

**10 a.m.  
to  
2 p.m.  
only!**

**Special Price  
Sept. 30**

*Note: We do not accept  
appliances (white goods),  
such as stoves, microwaves,  
dehumidifiers or cooling units.*



*Electronics not  
accepted at any  
other hazardous  
waste collection.*

## 2011 Household Hazardous Waste Collection Schedule

**Location:** Albert Lea HHW collections are held at the  
City Transfer Station, 2506 W. Richway Drive.

Collections in other cities are generally at the city hall or fire station.

Date	City	Day	Time
7 - 9	Albert Lea	Saturday	9 a.m. - Noon.
7 - 13	Twin Lakes	Wednesday	3 - 6 p.m.
7 - 21	Oakland	Thursday	Noon - 3 p.m.
7 - 26	Clarks Grove	Tuesday	Noon - 3 p.m.
8 - 20	Albert Lea	Saturday	9 a.m. - Noon.
8 - 23	Maple Island	Tuesday	11 a.m. - 2 p.m.
9 - 24	Albert Lea	Saturday	9 a.m. - Noon.
9 - 28	Glenville	Wednesday	Noon - 3 p.m.



### Meet Chad Adams, Albert Lea City Manager

Meet Chad Adams, City Manager for the City of Albert Lea. Adams comes to Albert Lea from Medina, Minnesota, where he was City Administrator for 8 years. Prior to that, he was City Administrator in Onawa, Iowa. He has a BA in History and a BA in Political Science from Southwest Minnesota State University and a Master's degree in Public Policy from the University of Northern Iowa.

During his first few weeks in Albert Lea (he began his position June 1) Adams has been busy meeting with Department Heads and staff, touring the community and city facilities and learning about the day to day operations of all the departments. He has been meeting individually with City Council members to get a sense of what their individual priorities are and hopes to meet more in depth with them at a council retreat in July.

The budget is a major issue in Albert Lea as it is in other communities. As of this writing, the State still doesn't have a budget agreement and the city is waiting to find out how they will be affected. A decrease in Local Government Aid (LGA) is almost a certainty and a decrease in Market Value Tax Credits would raise property taxes on affected homes. Depending on that outcome, decisions on cutting services and/or personnel may have to be made.

One big challenge Adams says he is facing is getting over the hurdle of being new in town - learning all the background of the city, analyzing resources available, strengthening or rebuilding relationships with partners in the community such as the Albert Lea Economic Development Agency, Housing and Redevelopment Authority, and the Chamber of Commerce. Adams knows that he will have to be patient during this process although he'd like to jump in and get things moving.



Adams said he felt a connection with Albert Lea, the city council and staff when he went through the interview process. The issues and projects facing Albert Lea are those that he is most interested in - downtown revitalization, finding a fit for the Blazing Star Landing and finding development opportunities for the city. He also knew that he wanted to raise his family in a rural regional center and Albert Lea fit the bill.

The fact that the City Manager position in Albert Lea has a long history and is a well defined position also appealed to Adams. In both the communities he served, he was the first City Administrator. In Albert Lea, the City Manager position has more authority and for all intents and purposes acts like the CEO of a company.

Adams finds similarities in Albert Lea to the previous communities he served in. Medina has large rural parcels waiting for development and is experiencing development along

its major highway. Their historic downtown "Hamel" is being revitalized. A streetscape project was recently completed. In Onawa, the city has a successful Main Street façade grant program, similar to Albert Lea's Broadway Ridge Renewal Fund and a tax abatement program to spur building occupancy. The City helped build a community recreation center using a mixture of funding from public donations, grants and city investment.

Part of his analysis of Albert Lea includes development. Where should the emphasis be placed? Downtown as an anchor? More industry? More diversified housing stock? Development of the Blazing Star Landing? Adams feels that although the city has a comprehensive plan and the Minnesota Design Team visited a few years ago, that the community hasn't really decided what they want on the Blazing Star Landing and that should be more defined. He feels that is very important to put together a public dialog and weigh all the options.

When asked what his management style was, Adams responded that he wanted to be open, transparent and lead by example. He wants to be recognizable to the community and let them know that he is available to listen and will keep an open door to council and staff. He is looking forward to getting out into the community and speaking with civic organizations and participating in community events.

In his spare time, Adams likes to play basketball and tennis and enjoys riding bike. He hopes to be a part of the Land Between the Lakes triathlon next year.

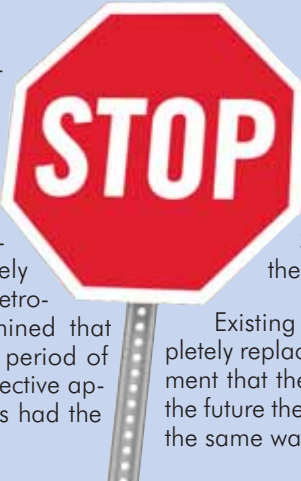
Adams is married and he and his wife Ann have three children, Alivia, 8, Grant, 5 and Will, 2.

### Federally Mandated Sign Reflectivity

The Federal Government has mandated that traffic signs be maintained so that they are visible both day and night. A certain level of reflectivity must be added to the signs to achieve this.

By January 2012, all government agencies must have a plan in place as well that outlines how they will assess, manage and maintain the relectivity of thier signs. All regulatory and warning signs such as stop signs must be fitted with the reflective material by January 2015 and all street signs must have 6 inch letters as well as the reflective material by January 2018.

The City of Albert Lea has put together a program to change signs within the City. Since 2008 the Street Department has been doing a section of the city each year. The process will take seven years to complete. It costs approximately \$15,000 a year to replace or retrofit the signs so it was determined that stretching it out over a longer period of time would be the most cost effective approach. Almost half the city has had the signs retrofitted or replaced.



The City is saving money by retrofitting the majority of the signs. For example, a new stop sign with the proper reflectivity costs \$70 - retrofitting an existing sign costs about \$12 in materials. Of course, there is also some labor involved.

Existing street signs have to be completely replaced because of the new requirement that the letters be 6 inches tall, but in the future they will be able to be retrofitted in the same way.



### Finding Solutions when a 36" Diameter Wastewater Forcemain Fails

The following article appears on Fox Engineering's website and is reprinted with their permission.



Collapsed section of 36-inch diameter wastewater forcemain

The city of Albert Lea, Minnesota, owns and operates a 12.5 million-gallon-per-day wastewater treatment plant just east of the city. The plant was constructed in the early 1980s. A four-mile-long, 36-inch-diameter forcemain conveys wastewater from the main pumping station to the treatment plant. In March 2010, a collapse of the forcemain was discovered along its route near one of the local roads. The city immediately undertook emergency repairs to the forcemain at the point of collapse, avoiding any wastewater releases to the environment.



Preparing to pull a large length of HDPE liner pipe into the existing forcemain

The city retained FOX Engineering for advice on identifying the cause and extent of pipe deterioration and methods for making permanent repairs. Engineers suspected hydrogen-sulfide-related deterioration of the prestressed concrete cylinder pipe, particularly in areas where the forcemain did not operate in a full-flow condition.

After further research, FOX recommended that the city retain NDT Corporation of Massachusetts to perform non-destructive testing of the pipeline to further characterize the extent of damage. Sonic/ultrasonic resonant stress wave measurements were made on the exterior of the pipe at a number of excavated locations. The measurements were then used to determine the remaining thickness of the tested pipe sections and the potential problem areas along the forcemain where repair or replacement would be needed.

Based on the test results, city engineering staff, in consultation with FOX Engineering, prepared specifications for repairing approximately 5,100 feet of forcemain in two separate sections. The project was bid in July 2010, allowing contractors to propose alternate methods of repair: open-trench replacement of pipe sections with HDPE pipe, sliplining the pipe with HDPE pipe, or sliplining the pipe with Cured-in-Place Piping (CIPP).

The contractor opted to use the HDPE sliplining method. During the lining process, all wastewater was bypass-pumped around the forcemain sections being worked. The project was completed in January 2011, at a cost of approximately \$1.4 million.

FOX Engineering is an environmental engineering firm based in Ames, Iowa. They specialize in water and wastewater solutions for our diverse governmental and industrial clients. The firm's environmental projects vary in size and scope and can be found throughout the Midwest and beyond. They can be reached at www.foxeng.com or 800/433-3469.



HDPE liner pipe as it is being inserted into the 36-inch diameter forcemain

### Albert Lea Police Department Presents Citizen's Awards



Pictured: Chief Dwaine Winkels, Mayor Vern Rasmussen, Jr., Brooke Thompson, Macy Paul, Officer Ted Herman

The Albert Lea Police Department presented Citizen's Awards at the May 9 Council Meeting to Albert Lea High School students Macy Paul and Brooke Thompson.

These awards were presented for their involvement in the "Every 15 minutes" project at the Albert Lea High School. The students met every week before and after school from November to April to plan the project. During one day at school, every 15 minutes, a student is taken from class and their obituary is read. The student is then marked and unable to speak to anyone for the rest of the day. This is a graphic reminder that every 15 minutes, someone dies in an alcohol related crash.

High School Liaison Officer, Ted Herman, who worked closely with the students, says, "Macy and Brooke approached me at school and asked if I would help them bring the "Every 15 minutes" program to the students. I agreed to be a co-coordinator if they would commit the time it takes to put a program like this on. Without hesitation they both said yes. The program was extremely successful and it was all due to Macy and Brooke's dedication to educating their fellow students about the consequences of drinking and driving. I can't say enough good things about them."

**Aquatic Center is Open**  
**Mon.-Fri. 1:00-6:00 p.m.**  
**Sat. & Sun. 1:00-7:00 p.m.**  
**507-373-3328**  
 Daily Admission: Children 2 and under \$1.25 (includes tax)  
 3-17 year olds \$3.25 each (includes tax)  
 18 and older \$3.50 (includes tax)  
 Individual Season Pass: \$35 in town + tax \$45 out of town + tax  
**NO REFUNDS - NO CHECKS ACCEPTED AT THE AQUATIC CENTER**



# Albert Lea Parks and Recreation *The City of Albert Lea*

## Summer Carnival

Join us for an afternoon of carnival games, face painting, bouncies, food and so much more!

**When:** Wednesday, July 13

**Time:** 4:00 p.m.-7:00 p.m.

**Where:** Farmer's Market-North Broadway Parking Lot

**Fee:** \$2.00 (includes all games)

Children 2 and under FREE

\*Food and beverage available for purchase at Farmer's Market



## Freeborn County "Free Swim Days"

Come out to the Albert Lea Aquatic Center for a FREE day of fun! "Free Swim Days" are funded by Freeborn County Public Health with funding from a Statewide Health Improvement Program (SHIP) grant from the Minnesota department of Health.

**When:** Sat. July 16th (rain date July 17th)

Sat. August 13th (rain date August 14th)

**Time:** 1:00-7:00 p.m.

**Where:** Albert Lea Aquatic Center

**Fee:** FREE!

## Movies in the Park

Join us at Edgewater Park Bandshell for great family movies! Take a seat on the bench or bring your lawn chairs and blankets to relax and enjoy the show.

**When:** Friday, July 22nd -MegaMind (PG)

Friday, August 12th -Hachi (G)

Friday, August 26th - Tangled (PG)

**Time:** 8:30 p.m.

**Where:** Edgewater Park Bandshell

**Fee:** FREE

Movies in the Park is sponsored by First Presbyterian Church, A.L. Family YMCA and Park and Rec.

Movies will be rescheduled in case of inclement weather.

## Play Ball! MN Twins Clinic

The Minnesota Twins will be offering a free baseball and softball clinic to youth in and around Albert Lea. Play Ball! Minnesota Youth Clinics program provides boys and girls with the opportunity to enhance their baseball and softball skills, while also hearing positive messages about

staying in school and away from drugs and alcohol. Play Ball! Minnesota Youth Clinics are funded and administered by the Twins Community Fund. Clinics are open to boys and girls ages 6 to 16 and focus on hitting, fielding and throwing. Parents are encouraged to participate with their children. The Twins provide safe, youth-friendly equipment. Youth participants are asked to bring their baseball or softball gloves.

**When:** Saturday, July 23rd

**Time:** 9:00 a.m.-6-9 year olds

10:30 a.m.-10-16 year olds

**Where:** Hayek Field Complex (in case of inclement weather-City Arena)

**Fee:** FREE

## Beach Luau

Bring your family out for warm weather fun! Enjoy limbo and hula hoop contests, water balloon volleyball, sand bowling, a sandcastle contest, a bonfire, bouncies, s'mores and DJ! Also, bring your suits and cool off in the lake. Lifeguards will be on duty from 6:00-7:00 p.m. Sandcastle judging will begin at 8:00 p.m.

**When:** Wednesday, July 27

**Time:** 6:00 p.m.-9:00 p.m.

**Where:** City Beach

**Fee:** FREE

Food and beverages will be available for purchase.



## Garden Contest 2011

Come participate in our citywide celebration of gardening! Garden contest categories include, Vegetable/Fruit Garden, Flower Garden, Vegetable/Fruit Container Garden, Flower Container Garden, Children's Garden and Water Garden. For more information on judging criteria and rules contact Parks and Recreation at 377-4370 or check out our website at [www.cityofalbertlea.org](http://www.cityofalbertlea.org)

**Entry Deadline:** Friday, July 29

Judges visit finalists' gardens: August 8 and 9

Awards Ceremony: Late August (TBA) at Farmers Market

## Passport to the Parks!

Have you taken a tour of your hometown lately? Did you know that Albert Lea has over 41 parks? This summer, challenge your family and others to set foot outdoors and get to know your local parks. Here's the challenge...head with your family to at least 15 parks this summer and see what they have

to offer. Take a picture next to the park sign. When you've hit 15, send the pictures in to us for a chance to win great prizes from local businesses! Pick up your passport guide at the Parks and Recreation office located at the City Arena or online at [www.cityofalbertlea.org](http://www.cityofalbertlea.org).

**When:** Challenge begins May 2nd and runs until August 31st

**Fee:** Free to participate!

Benefits: quality time with family and friends and a new appreciation for your local parks!

**Send pictures to:** [jdavis@city.albertlea.org](mailto:jdavis@city.albertlea.org) or mail to: Albert Lea Parks & Recreation Attn: Jenny 221 E. Clark Street, Albert Lea, MN 56007



## Play Day at the Pool

Kids and families come and enjoy a fun-filled day at the Albert Lea Aquatic Center! Power 96 will be broadcasting LIVE. We'll play lots of games with the kids and little kids and you'll have a chance to win awesome prize packages!

**When:** Fri. July 29th

**Time:** 1:00-3:00 p.m. (pool stays open until 6:00 p.m.)

**Where:** Albert Lea Aquatic Center

**Fee:** Just your admission into the Aquatic Center

\$1.25-children 2 & under

\$3.25-children 3-17 years

\$3.50-18 years & older

## Kids-Only Camp Out

Ages 7-13

Grab your friends and head outdoors where we'll be camping out at beautiful Edgewater Park! Come and enjoy canoeing, scavenger hunts, games, a guided night hike and many more camp activities. We'll also be making lunch, supper and breakfast the next morning over the campfire! Items to bring will be handed out when you register. Some tents will be available, but if you have your own we encourage you to bring it. We will be canoeing from Brookside Boat Landing to Edgewater Park. Camp-out is sponsored by Parks and Recreation and ISD #241 Environmental Learning Center.

**When:** Wednesday, August 10

**Time:** Drop-off kids Wednesday at 10:00 a.m. and pick-up next day at 9:00 a.m.

**Where:** Drop-off at Brookside Boat Landing Boat House/Pick-up is at Edgewater Park; (we will be spending the night at Edgewater cottage if rain)

**Fee:** \$10 in town \$15 out of town (includes meals)



## Family Bike Safety Rodeo a Huge Success!

Ellen Kehr, Statewide Health Improvement Project (SHIP)

On Saturday May 21, the first annual "Family Bike Rodeo" was held at Southwest Middle School, and what a surprise! Despite the dreary weather conditions, the turnout of 150 children and adults was fantastic! Kids and parents learned about helmet fit, bike safety checks, bicycle laws, and how to "Drive Your Bike." While parents observed from what we fondly called the observation deck, children embraced the rain for the Bicycling Skills Course with several kids happily reporting, "I never get to ride in the rain. This is awesome!"



Awesome indeed was the great work done that day for safe, smart cycling in our community. SHIP (the Statewide Health Improvement Program), Pioneering Healthier Communities and the Albert Lea Vitality Project co-sponsored this event and enlisted the expert help of the Bicycle Alliance of Minnesota. BikeMN proved to be a perfect fit and together with our many volunteers lead a great bike rodeo.

The community volunteers came from all sectors and demonstrated an unprecedented commitment towards the value of safe, smart cycling for Albert Lea's youth. The Albert Lea Police Department presented Safety Awareness, the Fire Department helped the young

cyclists navigate the skills course ("yup" they were all out there in the rain), the Superintendent of Schools supervised the video station, Martin's Cycling & Fitness conducted bike safety checks, Mayo Health Care Systems Auxiliary fit the helmets and the Noon Kiwanis sent many volunteers to work with registration and check-out. We believe that the huge success of the Rodeo can be attributed to the joint efforts of so many dedicated partners. Thank you to all who came and all who participated! Let's keep up the great work for safe, smart cycling in our community. See you next year rain or shine!

### One World, Many Stories

**Albert Lea Public Library  
Summer Reading Program 2011**  
June 6th- July 23rd  
**Read Books and Receive Prizes!!**  
Children of all ages encouraged to sign up  
online @ www.alplonline.org beginning May 2nd.

**Weekly Programs**

**Storytime**- Mondays, Tuesdays & Thursdays at 10:30 a.m.  
**Gametime**- Tuesdays at 2 p.m.  
**Art Zones Studio**- Wednesdays at 10:30 a.m.  
**Book Pals Book Club (Gr. 3-5)**- Wednesdays at 2 p.m.  
**Night-time Storytime**- Thursdays at 6 p.m.

**Special Events**

**Crafts & Games**- Thursday, July 7th at 2 p.m.  
**BINGO**- Thursday, July 14th at 2 p.m.  
**Zoo-man**- Thursday, July 21st  
at 2 and 3 p.m.

Children's Room  
211 East Clark Street  
Albert Lea, MN 56007  
(507) 377-4356

Sponsored by:

## SENIOR CENTER FUNDRAISER

Ozark Production from Branson, MO

Presents

# Jeff Brandt

**Sunday, July 10 at 2:00 p.m.**  
**Albert Lea High School**

Jeff and his band Galaxy will be performing a wide variety of music from many decades!

Jeff is considered one of the top singing impressionists in the country. He is known as the "Voice of the Ozarks"

This is a wonderful fundraiser for the Senior Center and we hope to see you there - it will be a great show.

**Ticket specials ONLY AVAILABLE in advance over the phone.**

**1 ticket - \$17.00**

**2 tickets - \$30.00**

**3 or more tickets—\$12.00 each**

**Call for your tickets today at**

**1-800-280-9757**



## Albert Lea Senior Citizen Center

**Membership Dues:** Annual membership fee is \$30.00 per year, our year runs from January 1 thru December 31.

**Hours:** Monday- 8:00 a.m. to 12 noon, Tuesday - Friday 8:30 a.m.-4:30 p.m. For more info call **373-0704**.

As a member of the Albert Lea Senior Center you will receive a monthly newsletter to keep you up to date on Center events.

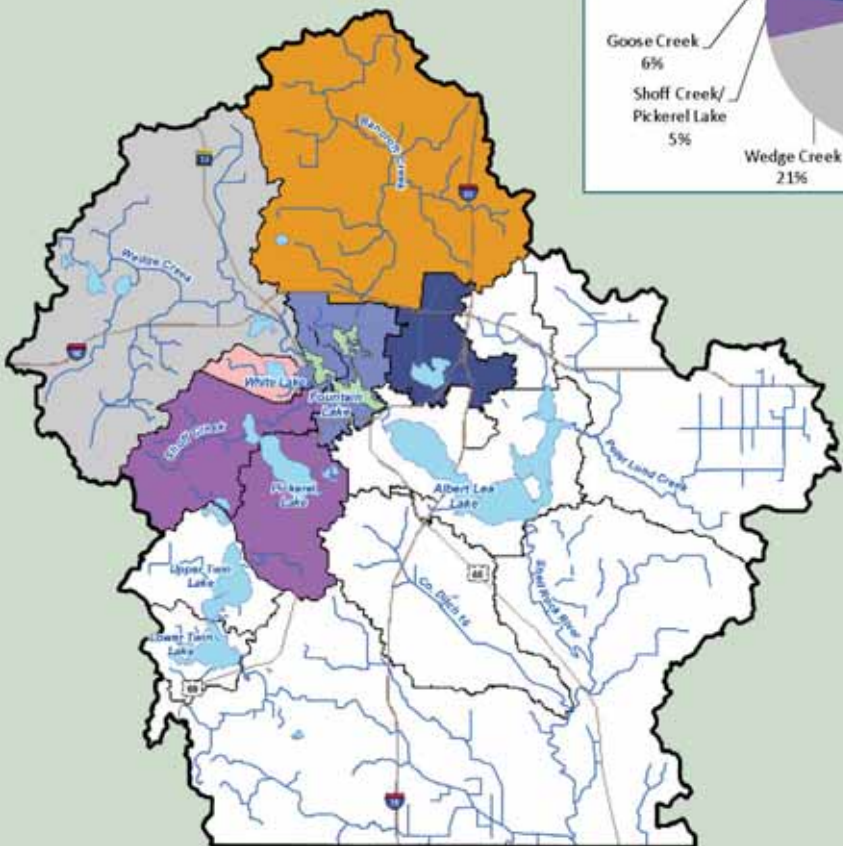
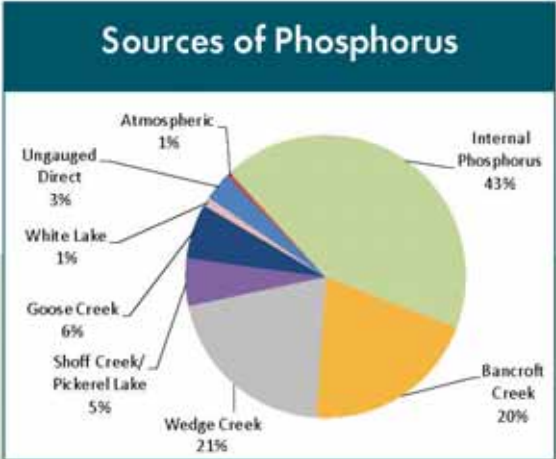
**Participate in:** Aerobics, Yoga, Walking Club, Red Hat Society, Crafts and Card Recycling, Monthly Birthday Party, Play Ph-effer, 500 or Bridge, Blood Pressure Checks, Innovision Eye Care, Coping with Grief, Stress Management Class, Class on Macular Degeneration, AARP Driver Safety Class, Ping Pong and Special Events.

There's a Pool Room with 5 pool tables and the Lounge is open to use the computers, watch TV or put in a movie, work on puzzles or visit with friends.

Take a day trip to exciting destinations around Minnesota, Iowa and Wisconsin.

# A Closer Look: Phosphorus Contributions to Fountain Lake

Contributions of phosphorus, a nutrient that can degrade water quality in several ways, were estimated based on water quality monitoring data collected from Fountain Lake and the upstream lakes and streams. The pie chart at right shows a breakdown of the phosphorus sources to the lake during the 2010 monitoring season (April through October). The areas that correspond to each of the sources are shown on the map below.



Stormwater is a significant source of phosphorus to Fountain Lake. When it rains, stormwater carries sediment and the phosphorus attached to sediment particles, from the land into nearby lakes and streams. Bancroft and Wedge Creeks, two of the largest tributaries to Fountain Lake, together contributed about 40% of the phosphorus loading to the lake during the 2010 monitoring period. Another significant source of phosphorus to Fountain Lake during the 2010 monitoring season was internal loading (about 43%). All lakes accumulate phosphorus (and other nutrients) in the sediment from the settling of particles and dead organisms. Internal loading occurs in some lakes as the phosphorus in the sediment is reintroduced into the lake water and becomes available again for uptake by plants. This complex process of internal loading can be affected by water temperature, oxygen, pH, wind mixing, and disturbance by bottom-feeding fish such as carp.



## Community News

c/o The City of Albert Lea  
221 E. Clark St.  
Albert Lea, MN 56007

# Leave it on the Lawn!



It's that time of year again. Spring has sprung and lawns are green and ready for mowing. The City of Albert Lea, Freeborn County and the Shell Rock River Watershed District would like to remind you to "Leave it on the Lawn" when mowing this year.

Mowing into the street is a violation of City of Albert Lea ordinances.

Please take a little extra time to clean up properly after you mow. The City of Albert Lea will be far more aggressive issuing citations - a violation could result in legal action.

Why is it important to keep grass clippings off of city streets? Grass clippings contain phosphorus, the nutrient that turns lakes green with algae. Grass clippings from actively growing lawns contain 0.1 lbs of phosphorus - enough to produce 30 to 50 pounds of algae growth if it finds its way to a lake or river. In the City of Albert Lea our storm sewers drain directly into our lakes.

What can you do to prevent this? When mowing, grass clippings should be directed away from the street, driveways, sidewalks or other paved areas. Curbside storm sewers can transport grass clippings (along with other street debris and dirt) to near-by lakes, rivers and wetlands.

Grass clippings blown on the street, driveways or sidewalks or other paved areas during mowing should be swept up and returned to the lawn or composted.

Pick up an informational brochure on how you can "Leave it on the Lawn" at Albert Lea City Hall, Shell Rock Watershed District and the City Inspection department.

## Need to Reduce Pet Waste Contamination

Fountain Lake and the Blazing Star Bike Trail are two of the many focal points for Albert Lea and Freeborn County.



Every time it rains there is a potential for thousands of pounds of pet waste to wash down storm drains and into streams, rivers and lakes. Two studies conducted in the mid-90s revealed that 95% of the fecal matter found in urban watersheds was non-human. Pet waste contains bacteria that can contaminate a watershed, posing health risks to humans and other animals, potentially causing the spread of disease, such as Giardiasis and E-coli. Based on results from the above-mentioned studies, if all pet owners scooped their pet's waste, 95% of fecal matter could potentially be eliminated from waterways, thus greatly improving water quality. Being responsible for your pet's waste is something that everyone can do to make a difference.

Pet Waste Stations have been added around Fountain Lake and along the bike trail and because of this, the reduction of the pet waste contamination to our watershed could be reduced by 50 %.